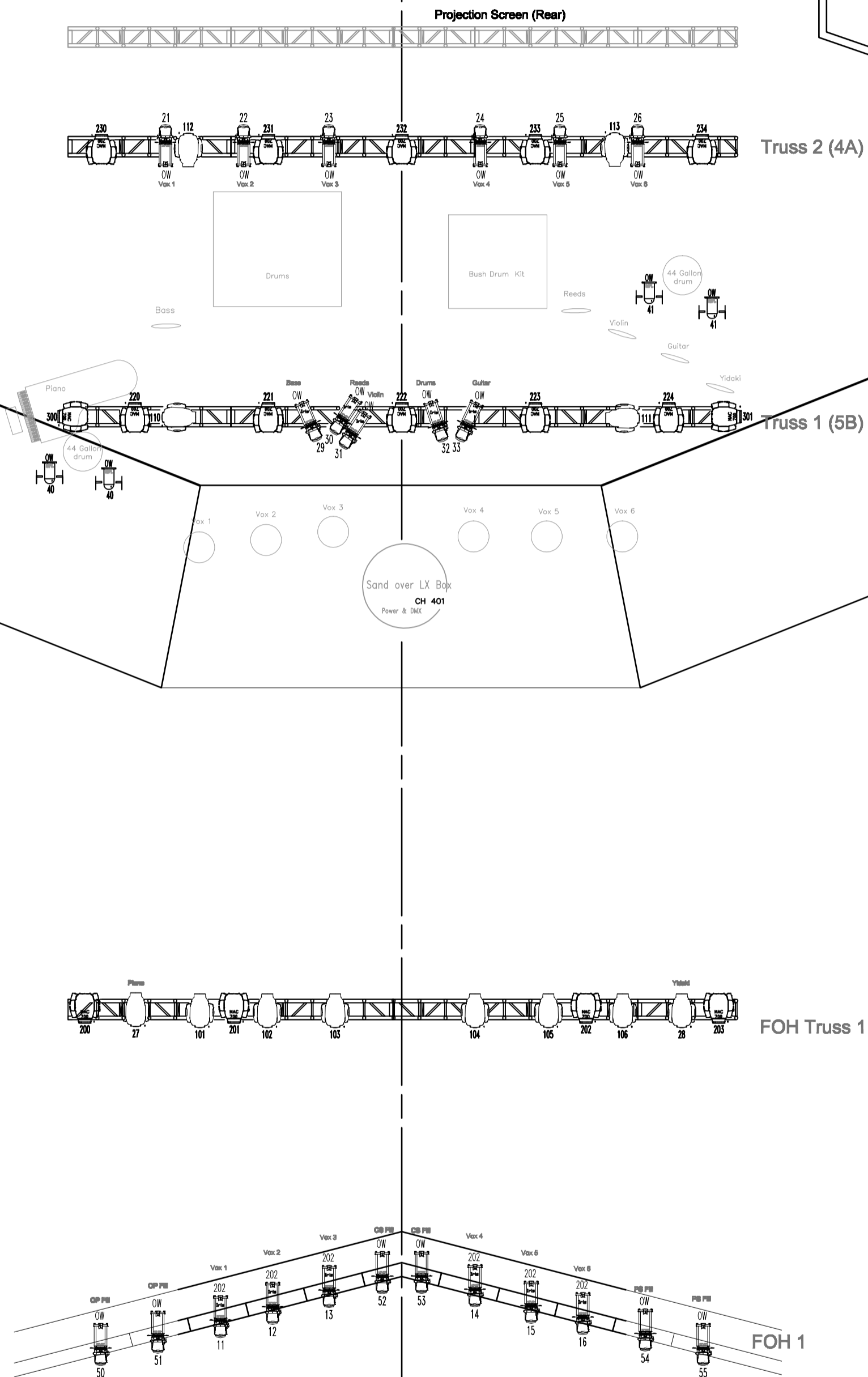


Light plots are custom designed based upon venue capacity and hall size. Sponsor shall advance venue specifics with Artist's Lighting Director, Michele Preshaw, M: +61 417 545 649, E: mpreshaw@netspace.net.au

The following provided as examples only and may be used for reference only...



Legend		
Symbol	Lantern	Count
	12/28 Pacific (Venue FOH)	12
	12/28 Pacific (Hired)	11
	Par 64 Stubby, on H-stand	4
	MAC Viper Profile	14
	MAC 700 Wash	16

EXAMPLE: 2,200-Seat Venue

NOTES:

Truss positions as originally spec'd. (confirm FOH Truss 1)

All light to keep off Projection Screen.

2 x MAC Vipers sit on top of vertical 3m Truss on forestage.

No Haze.

Michael Fowler Centre
dirtsong, Black Arm Band

0 1.0 2.0 3.0 5.0m

Scale 1 : 100 (A3)

Lighting: M. Preshaw 0417 545 649
 v1.0 25 01 16